



ArcelorMittal

# Granite<sup>®</sup> and Estetic<sup>®</sup> Colour palette



# CLASSIC



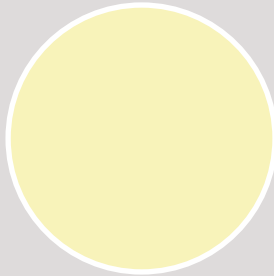
G9010\* *Pure white*



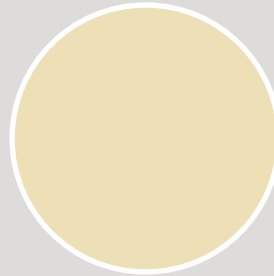
G9001\* *Cream*



G9073 *Bianco grigio*



G1202 *Crema bidasoa*



G1015\* *Light ivory*



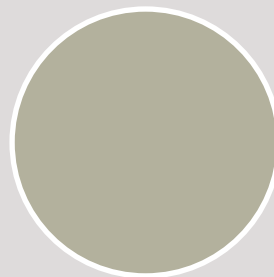
G9106 *Blanco pirineo*



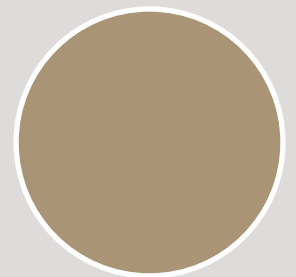
G7035\* *Light grey*



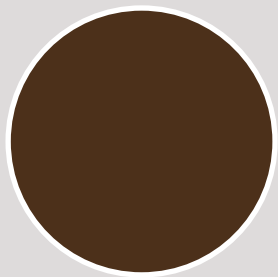
G7501 *Gris perla*



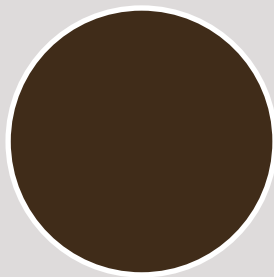
G7032\* *Pebble grey*



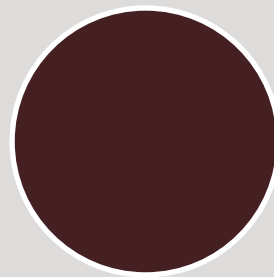
G1019\* *Grey beige*



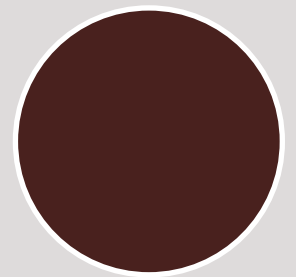
G8011\* *Nut brown*



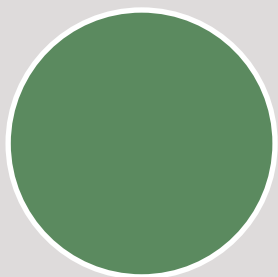
G8012\* *Red brown*



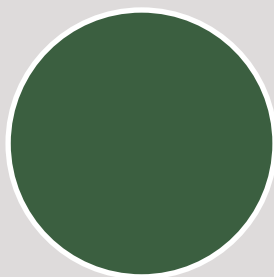
G3009\* *Oxide red*



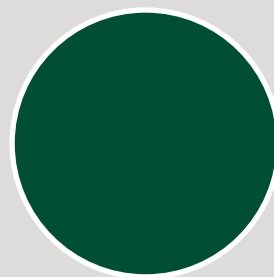
G8717 *Testa di moro*



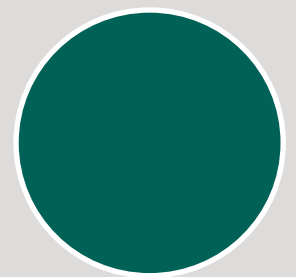
G6011\* *Reseda green*



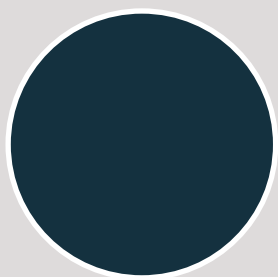
G6003\* *Olive green*



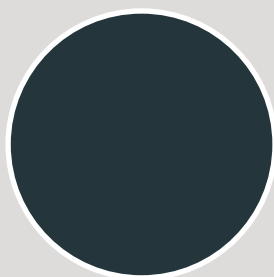
G6005\* *Moss green*



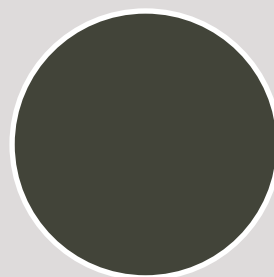
G6300 *Verde Navarra*



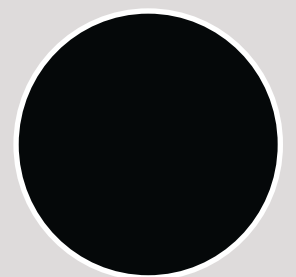
G5008\* *Grey blue*



G7016\* *Anthracite grey*



G7022\* *Umbra grey*



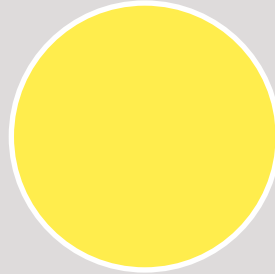
G9005\* *Jet black*

# MAGIC

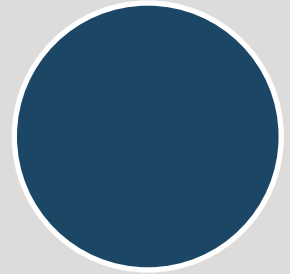


G9002\* *Grey white*

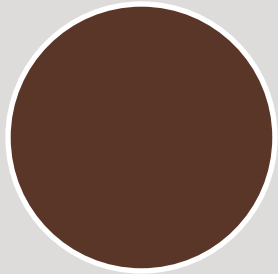
ArcelorMittal's **Granite®** and **Estetic® Standard** range of organic coated steels are available in a rich diversity of colours and surface finishes. This is one of the outstanding advantages of organic coated steel. To help you make your choice, ArcelorMittal offers a wide range of colours to suit your taste and your budget. Other colours are available on request. Diversity and originality will be your trademark.



G1018\* *Zinc yellow*

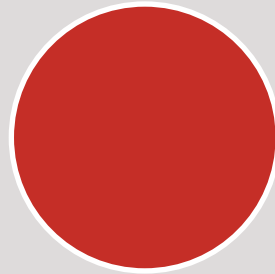


G5002\* *Ultramarine blue*

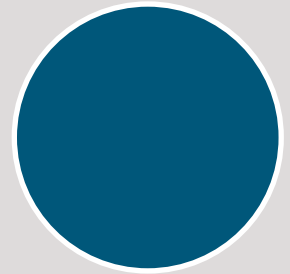


G8014\* *Sepia brown*

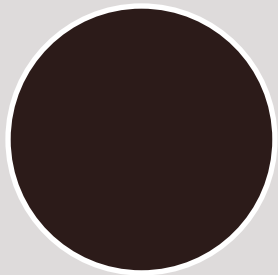
This range of colours has been specially designed for the following products: Granite® Standard, Granite® HD, Granite® HDS, Granite® HDX and Estetic® Standard. To check which colours are available for specific products or applications, please consult the selection guide on the next page.



G3000\* *Flame red*



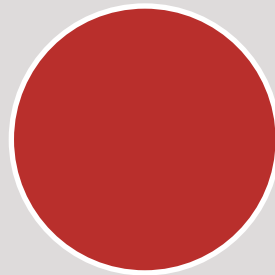
G5010\* *Gentian blue*



G8017\* *Chocolate brown*

All these colours have a smooth finish and 30 GU (gloss units - Gardner 60°).

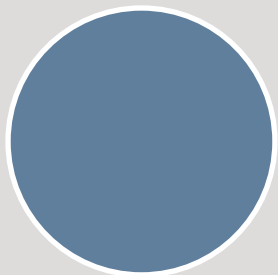
The colours presented in this colour palette can be supplied from all our organic coating lines. We have put in place a common quality assurance system in all mills to enable us to guarantee that colours produced on all our lines conform to the standard.



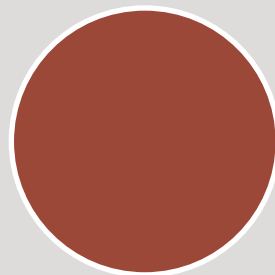
G8701 *Rojo Teja*



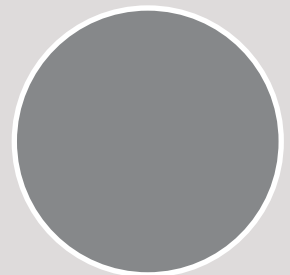
G9006\* *White aluminium*



G5014\* *Pigeon blue*

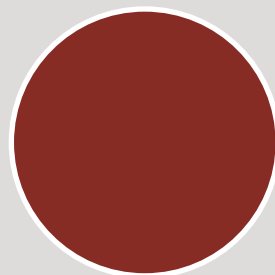


G8004\* *Copper brown*



G9007\* *Grey aluminium*

*NB: Although we have taken great care to reproduce the colours in this palette, we cannot guarantee that they are a perfect representation. Consequently, these printed colour samples can only serve as a guide.*



G3011\* *Brown red*

*\* RAL code that is the closest approximation*

The table opposite shows which colours are available for which application. For outdoor use, we recommend the "Magic" range. These coatings are made with resins and pigments with excellent resistance to UV rays, so that we can guarantee that the colours will not fade (see terms of ArcelorMittal guarantees).

When ordering metallic colours, clients should always place an order for the whole building at the same time, or at least for a whole facade. It is also essential to ensure that the material is mounted the right way up.

For quality and uniformity, we offer two standard colours for the reverse side of the strip: B 7032\* and B 9002\*.

For further information on the technical properties of the different products and durability guarantees, please consult our website: [www.arcelormittal.com/fce](http://www.arcelormittal.com/fce) > Products & Services.

## Selection guide

Code	Name	Outdoor use				Indoor use
		Granite® Standard	Granite® HD	Granite® HDS	Granite® HDX	Estetic® Standard
<b>CLASSIC</b>						
G1015*	Light ivory	■	■	■	■	■
G1019*	Grey beige	■	■	■	■	■
G1202	Crema bidaso	■	■	■	■	■
G3009*	Oxide red	■	■	■	■	■
G5008*	Grey blue	■	■	■	■	■
G5014*	Pigeon blue	■	■	■	■	■
G6003*	Olive green	■	■	■	■	■
G6005*	Moss green	■	■	■	■	■
G6011*	Reseda green	■	■	■	■	■
G6300	Verde Navarra	■	■	■	■	■
G7016*	Anthracite grey	■	■	■	■	■
G7022*	Umbra grey	■	■	■	■	■
G7032*	Pebble grey	■	■	■	■	■
G7035*	Light grey	■	■	■	■	■
G7501	Gris perla	■	■	■	■	■
G8011*	Nut brown	■	■	■	■	■
G8012*	Red brown	■	■	■	■	■
G8014*	Sepia brown	■	■	■	■	■
G8017*	Chocolate brown	■	■	■	■	■
G8717	Testa di moro	■	■	■	■	■
G9001*	Cream	■	■	■	■	■
G9002*	Grey white	■	■	■	■	■
G9005*	Jet black	■	■	■	■	■
G9010*	Pure white	■	■	■	■	■
G9073	Bianco grigio	■	■	■	■	■
G9106	Blanco pirineo	■	■	■	■	■
<b>MAGIC</b>						
G1018*	Zinc yellow	■	■	■	■	■
G3000*	Flame red	■	■	■	■	■
G3011*	Brown red	■	■	■	■	■
G5002*	Ultramarine blue	■	■	■	■	■
G5010*	Gentian blue	■	■	■	■	■
G8004*	Copper brown	■	■	■	■	■
G8701	Rojo Teja	■	■	■	■	■
G9006*	White aluminium		■	■	■	■
G9007*	Grey aluminium		■	■	■	■

\* RAL code that is the closest approximation